

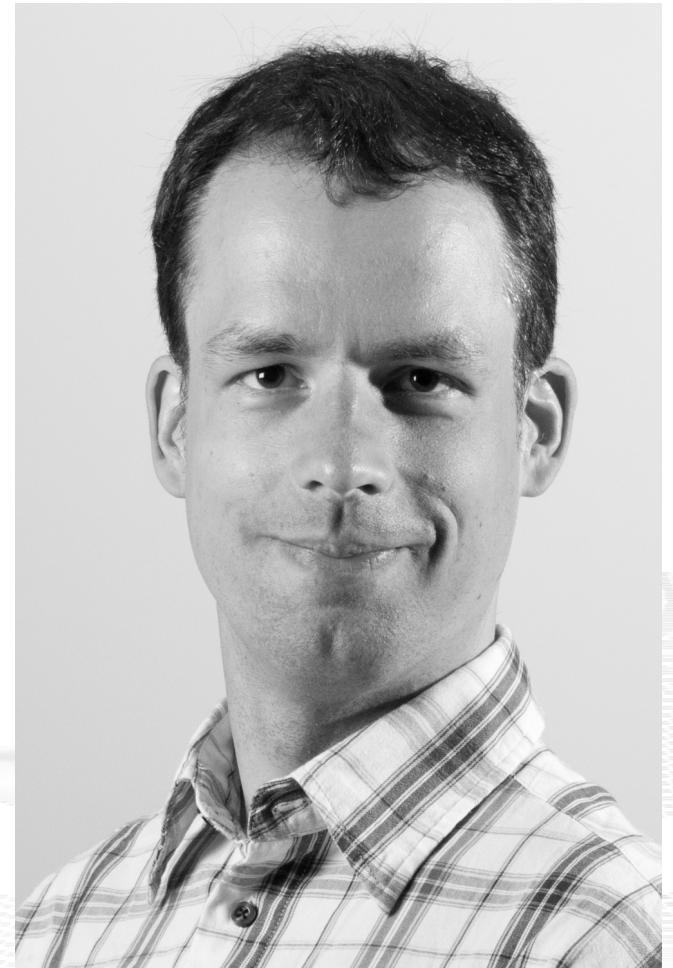
# Invited Talk at Høgskolen i Oslo og Akershus

## An Overview of the NorNet Testbed for Multi-Homed Systems

**Thomas Dreibholz, [dreibh@simula.no](mailto:dreibh@simula.no)**

Simula Research Laboratory A/S

**18 April 2013**



# Contents

- Motivation
- The NorNet Project
  - NorNet Core
  - NorNet Edge
- Research and Users
- Conclusion

# Overview: Motivation

- Motivation
- The NorNet Project
  - NorNet Core
  - NorNet Edge
- Research and Users
- Conclusion

# Motivation: Robust Networks

- More and more applications rely on ubiquitous Internet access!
- However, our current networks are not as robust as they should be ...



How to make networks more robust?



# Resilience by Redundancy

## Multi-Homing

- Connections to multiple Internet Service Providers (ISP)
- Idea: if one ISP has problems, another connection still works



**Do multiple ISP connections really improve robustness?**

# Idea: A Testbed for Multi-Homed Systems

**Research in realistic setups is necessary!**

- A multi-homed Internet testbed would be useful
  - Something like PlanetLab?
  - Perhaps with better node availability?
  - Support for mobile access (e.g. 3G) as well as wired?
- **NorNet** – A research testbed for multi-homed systems!
  - Lead by the Simula Research Laboratory in Fornebu, Norway
  - Supported by Forskningsrådet

**NORNET**

<http://www.nntb.no>

# Overview: The NorNet Project

- Motivation
- The NorNet Project
  - NorNet Core
  - NorNet Edge
- Research and Users
- Conclusion

# Goals of the NorNet Project

- Building up a **realistic** multi-homing testbed
- Wired and wireless
  - Wired → “NorNet Core”
  - Wireless → “NorNet Edge”
- **Perform research with the testbed!**



How to get a realistic testbed?



# Idea: Distribution of NorNet over whole Norway

- **Challenging topology:**
  - Large distances
  - A few “big” cities, many large rural areas
  - Svalbard:
    - Interesting location
    - Many polar research institutions
- **NorNet Core:**
  - Ca. 10 sites planned
- **NorNet Edge:**
  - Ca. 500 nodes planned



# Overview: NorNet Core

- Motivation
- The NorNet Project
  - NorNet Core
  - NorNet Edge
- Research and Users
- Conclusion

# Idea: Tunnelling

- Researchers require control over used ISP interfaces
  - Which outgoing (local site) interface
  - Which incoming (remote site) interface

- Idea: Tunnels among sites

- Router at site A: IPs  $A_1, A_2, A_3$

- Router at site B: IPs  $B_1, B_2$

- IP tunnel for each combination:

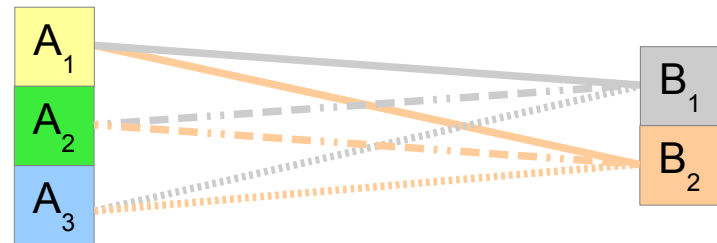
$A_1 \leftrightarrow B_1, A_1 \leftrightarrow B_2, A_2 \leftrightarrow B_1, A_2 \leftrightarrow B_2, A_3 \leftrightarrow B_1, A_3 \leftrightarrow B_2$

- Fully-connected tunnel mesh among NorNet Core sites (ca. 10)

- Each site's router (called **tunnelbox**) maintains the tunnels

- Static tunnels

- NorNet-internal addressing and routing over tunnels



# Address Assignment

- NorNet-internal address spaces:
  - Private NorNet-internal IPv4 “/8” address space (NAT to outside)
  - Public NorNet-internal IPv6 “/48” address space
- Systematic address assignment:
  - IPv4: 10.<Provider ID>.<Site ID>.<Node ID>/24 per site
  - IPv6: 2001:700:4100:<PP><SS>::/64 (*PP*=Provider ID; *SS*=Site ID)

**Make it as easy as possible to keep the overview!**




# Idea: PlanetLab-based Software for Experiments

- Key idea:
  - Researchers should get virtual machines for their experiments
  - Like **PlanetLab** ...
  - ... but with multi-homing, of course
- PlanetLab software:
  - Different “stable” distributions: PlanetLab, OneLab, etc.
  - Current implementation: based on Linux VServers
    - Not in mainline kernel
    - Patched kernel, makes upgrades difficult
  - The future: **Linux Containers (LXC)**
    - Active development by PlanetLab/OneLab
    - We are involved in testing experimental LXC software

# NorNet Core Site Deployment

A NorNet Core site:

- 1x switch
- 4x server
  - 1x tunnelbox
  - 3x research systems
- At least two ISP connections
  - Uninett 
  - Other providers

Status:

- 10+1 sites deployed
- Some more in the future



Longyearbyen 78.2°N,15.6°E



NorNet Core på Svalbard

# Monitoring

- PlanetLab:
  - 367 nodes of 1035 nodes alive (June 28, 2012)  
⇒ availability < 36% ☹
  - NorNet should do much better!
- Direct contact to technical staff/researchers at sites
- Monitoring using Nagios
  - Flexible
  - Extendable by service-specific plug-ins

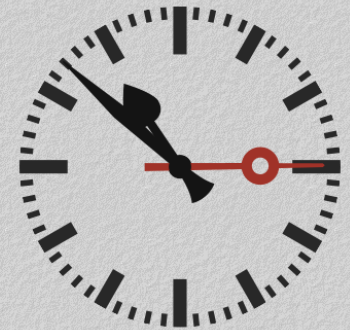
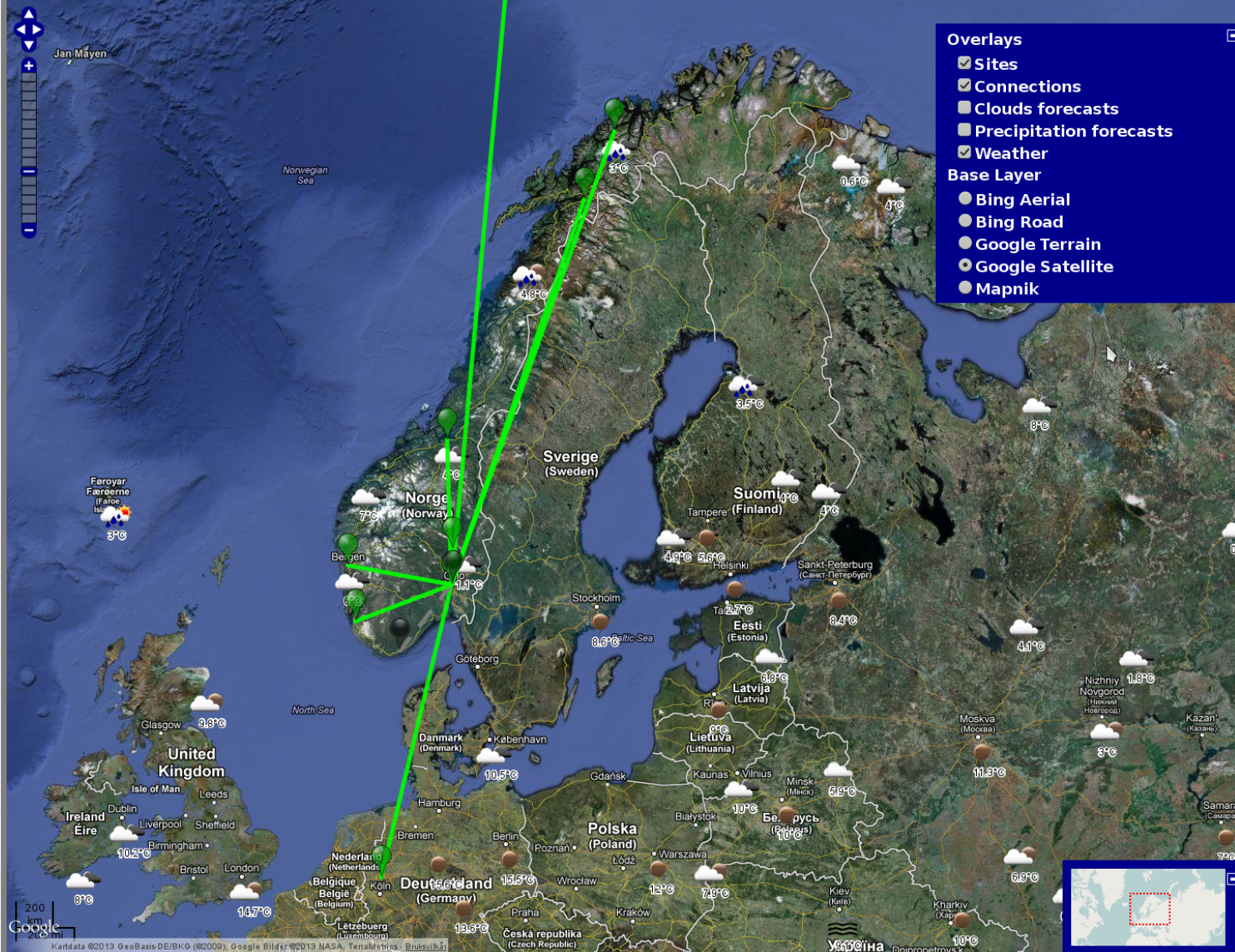
**Nagios**<sup>®</sup>

**How to visualise NorNet?**



# “Kontrollsentret”

Velkommen til NorNet-Kontrollsentret på Simula Research Laboratory, Fornebu



22:52:14  
Onsdag, 17. april 2013

## Lofasjon

Problemer:

😊 Ingen problem! 😊

I orden:

- 🇳🇴 @Høgskolen i Gløvik
- 🇳🇴 @Høgskolen i Narvik
- 🇳🇴 @Simula Research Laboratory
- 🇳🇴 @Universitetet i Bergen
- 🇳🇴 @Universitetet i Stavanger
- 🇳🇴 @Universitetet i Tromsø
- 🇳🇴 @Universitetet i Trondheim
- 🇳🇴 @Universitetet på Svalbard
- 🇩🇪 @Universität Duisburg-Essen
- 🇩🇪 @Universitetet i Aqder
- 🇩🇪 @Universitetet i Oslo

For mer informasjon om NorNet-prosjektet, se <https://www.nnib.no/>



# Overview: NorNet Edge

- Motivation
- The NorNet Project
  - NorNet Core
  - NorNet Edge
- Research and Users
- Conclusion

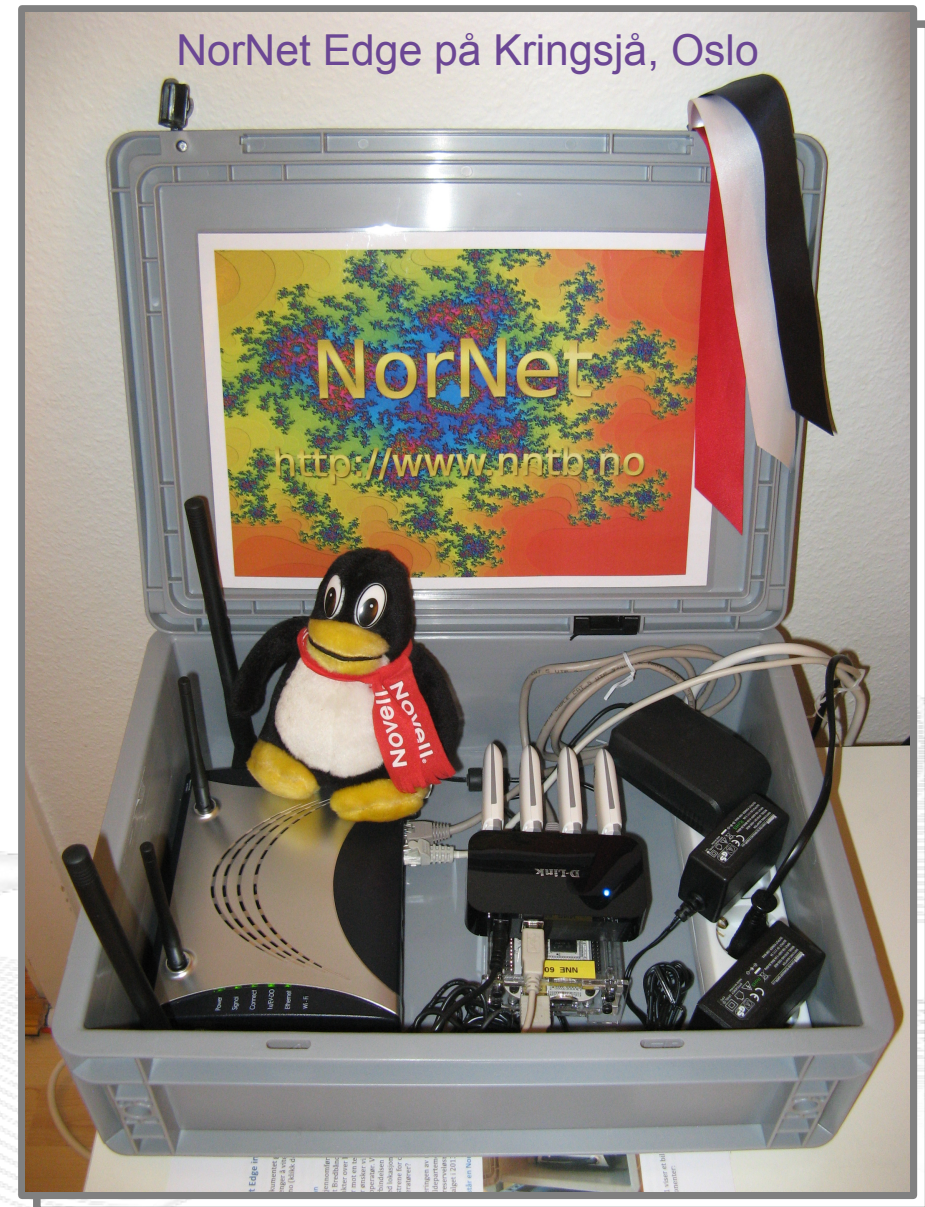
# The NorNet Edge Box: Ready for Deployment

## Box contents:

- Beagle Bone embedded Linux system
- 4x USB UMTS (at USB hub):
  - Telenor, NetCom,
  - Network Norway, Tele2
- 1x ICE CDMA mobile broadband
- 1x Ethernet
- Power supplies
- Handbook

## Status:

- Ca. 300 nodes distributed already
- Initial measurements



# Overview: Research

- Motivation
- The NorNet Project
  - NorNet Core
  - NorNet Edge
- Research and Users
- Conclusion

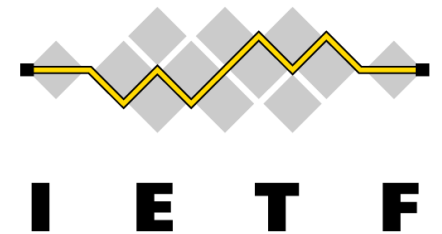
# Resilience

- Network resilience
  - Are there hidden dependencies among ISPs?
  - Are there dependencies between mobile and wired ISPs?
  - ...
- Mobility and handovers
- Applications
  - Emergency call handling (e.g. healthcare)
  - ...
- Security



# Load Sharing

- Multi-Path Transfer
  - Network Layer
    - Routing ...
  - Transport Layer
    - Concurrent Multipath Transfer for SCTP (CMT-SCTP)
    - Multi-Path TCP (MPTCP)
    - ...
  - Higher Layers
- Applications
  - Multimedia (e.g. IPTV, Video on Demand), ...
  - Web Real-Time Communication (WebRTC)
  - ...



# Users

***“The road to hell is paved with unused testbeds.”***

**[James P. G. Sterbenz]**

- Of course, NorNet does **not** intend to be another unused testbed!
- NorNet will be open for all interested users!
  - Similar to PlanetLab ...
  - ... but with higher node availability and tighter monitoring
  - ... and, of course, multi-homing
- **Particularly, it can also be used at Høgskolen i Oslo og Akershus!**

**More details to be announced soon!**

# Overview: Conclusion

- Motivation
- The NorNet Project
  - NorNet Core
  - NorNet Edge
- Research and Users
- Conclusion

# Conclusion and Future Work

- NorNet is progressing!
  - Management software under development
  - First site deployments have been made
- Future work:
  - Finish the initial deployment
  - Make sites multi-homed
  - Improve/refine management software

**And, of course, do some research!**

Any Questions?

N  R N E T

**Visit <http://www.nntb.no> for further information!**