

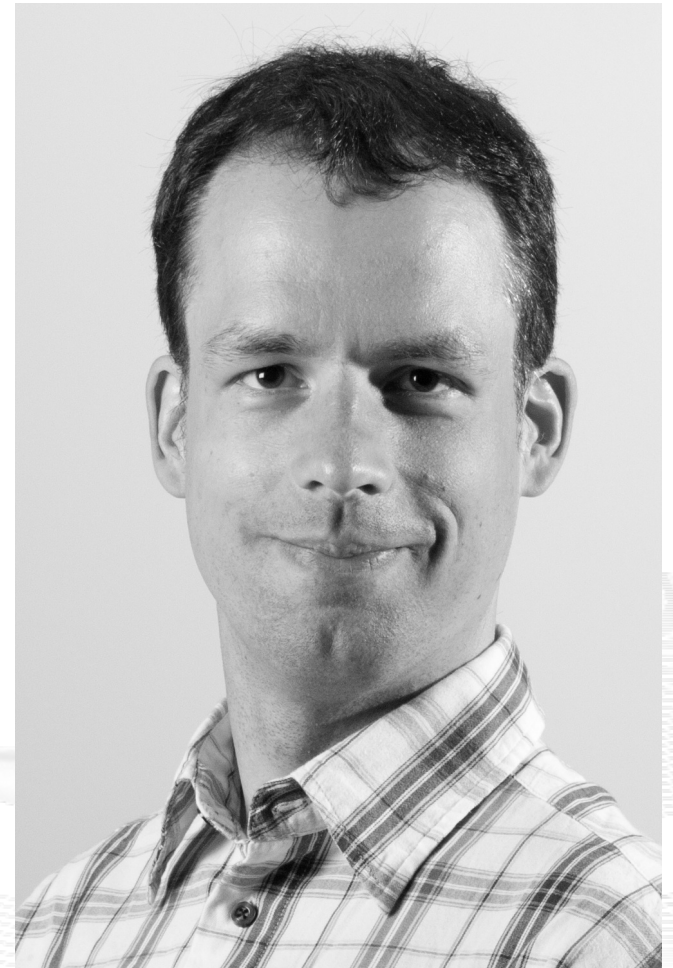
Presentation at the 89th IETF Meeting

The Status of MPTCP Deployment and Evaluation in the NorNet Testbed

Thomas Dreibholz, dreibh@simula.no

Simula Research Laboratory

3 March 2014



Contents

- Motivation
- The NorNet Testbed
- MPTCP Deployment
- Current Status

Motivation

MPTCP needs testing in realistic setups!

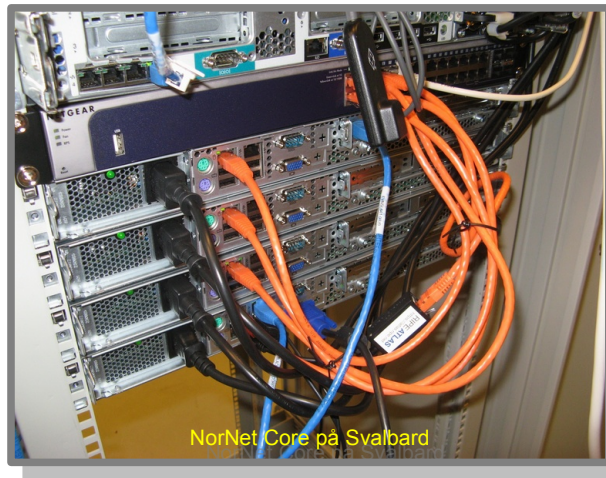
- **Wired networks**
 - Data centres, fibre, DSL, ...
- **Wireless networks**
 - 2G, 3G (UMTS, CDMA), 4G (LTE), WLAN, ...
- We have an open testbed platform for both: NorNet!
 - Similar to PlanetLab/OneLab, G-Lab, etc.

NORNET

<https://www.nntb.no>

The NorNet Testbed

NorNet Core



NorNet Edge



- Wired sites
 - 11 in Norway + 1 DE, 1 SE, 1 CN
 - Up to 3 ISPs (IPv4 + IPv6 if available)
 - Usually 4 servers per site
 - VMs: Fedora Linux 18, LXC
 - **Linux kernel MPTCP v. 0.88 in test**
 - Custom VMs possible (e.g. FreeBSD)
- Wireless nodes
 - Ca. 400, distributed all over Norway
 - Custom-made ARM embedded system
 - Debian Linux
 - **Linux kernel MPTCP v. 0.88**
 - Up to 4x UMTS, 1x CDMA
 - 1x wired, 1x WLAN

Ongoing MPTCP Research in NorNet

- MPTCP performance in **heterogeneous networks**
 - Evaluation of the current state of the art for MPTCP (i.e. Linux MPTCP v. 0.88)
 - Combination of multiple 3G paths
 - Some 2G/3G/4G paths
 - Combination with WLAN paths
- Performance improvements under development – more details soon!

Interested in using NorNet? Talk to us!

“NorNet wants to be a building block of
the railroad to heaven” ...

... and not be another unused testbed that paves the road to hell!

A black steam locomotive with red accents is pulling a train of red passenger cars at a station platform. Several people are standing on the platform, some looking at the train. The background shows green trees and a building. The locomotive has a large smokestack and a headlight. The train is moving along the tracks.

See <https://www.nntb.no> for details!